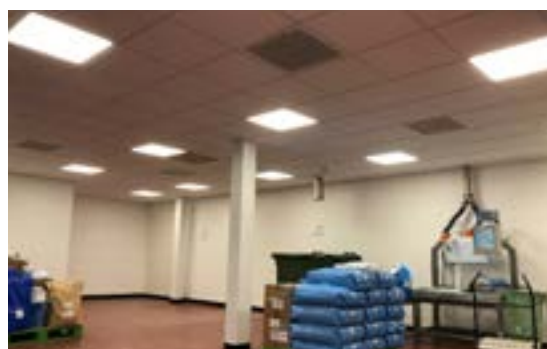


Transforming Production Facility with Sustainable Mechanical and Electrical Solutions



Project Details

Completed	2019
Sector	Processing
Location	Bradford
Type	Mechanical & Electrical



With a history dating back to 1979, this production facility in Bradford has been dedicated to crafting quality seasonings, fine food ingredients, and culinary blends. However, a tragic fire left them in need of a fresh start, as their offices, warehouse, and main production unit were entirely consumed.

In their time of need, Watsons Building Services stepped into design and install the vital mechanical and electrical infrastructure for a brand new, state-of-the-art production facility, warehouse, and office headquarters.

Project Scope

- ▶ BMS-controlled LTHW heating.
- ▶ HVAC and mechanical heat recovery.
- ▶ Electrical distribution, photovoltaics, and lighting.
- ▶ EV charging, fire alarms, LED lighting, and power.
- ▶ Water conservation with sensors.
- ▶ Coordinated equipment supply during machinery installation.
- ▶ Efficient lighting with sensors.
- ▶ 555 solar panels generating 150kWp and 116,000kWh/year.



Watsons Building Services Ltd

Watson House, Howden Road, Silsden, Keighley, BD20 0HD
Telephone: 01535 652338
Email: mail@watsonsbs.com
Website: www.watsonsbs.com